



*bubble*  
*mon*

宝莱宝

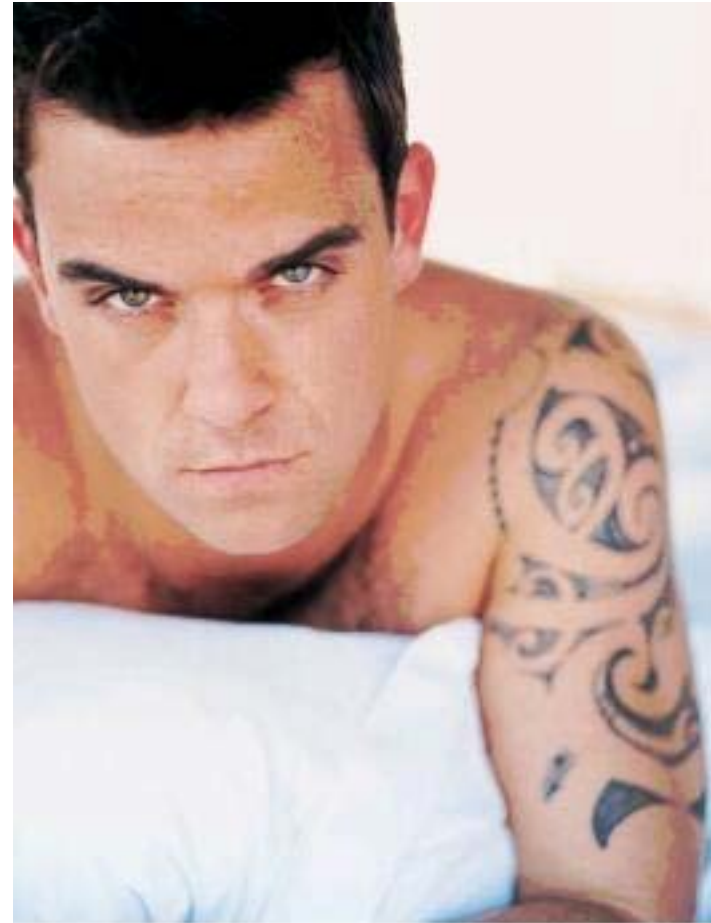
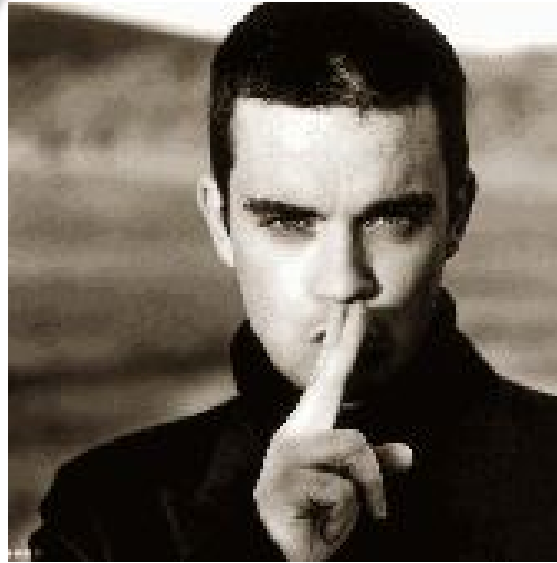
[www.bubblemon.com](http://www.bubblemon.com)

宝莱宝 正式授权



Licensed by bubblemon.com

# *Robbie Williams*





## *Robbie Williams' Profile*

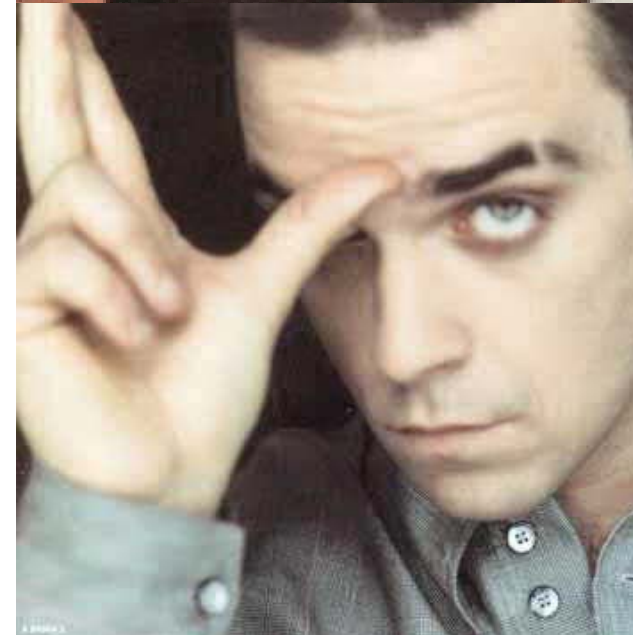
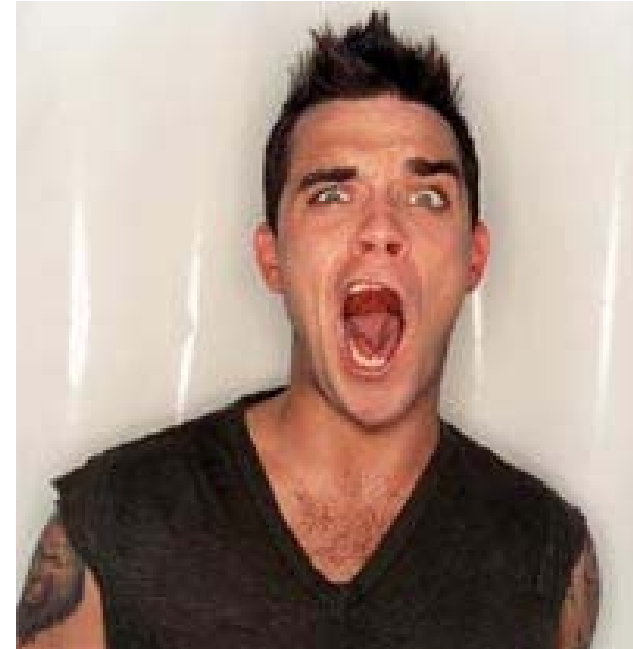
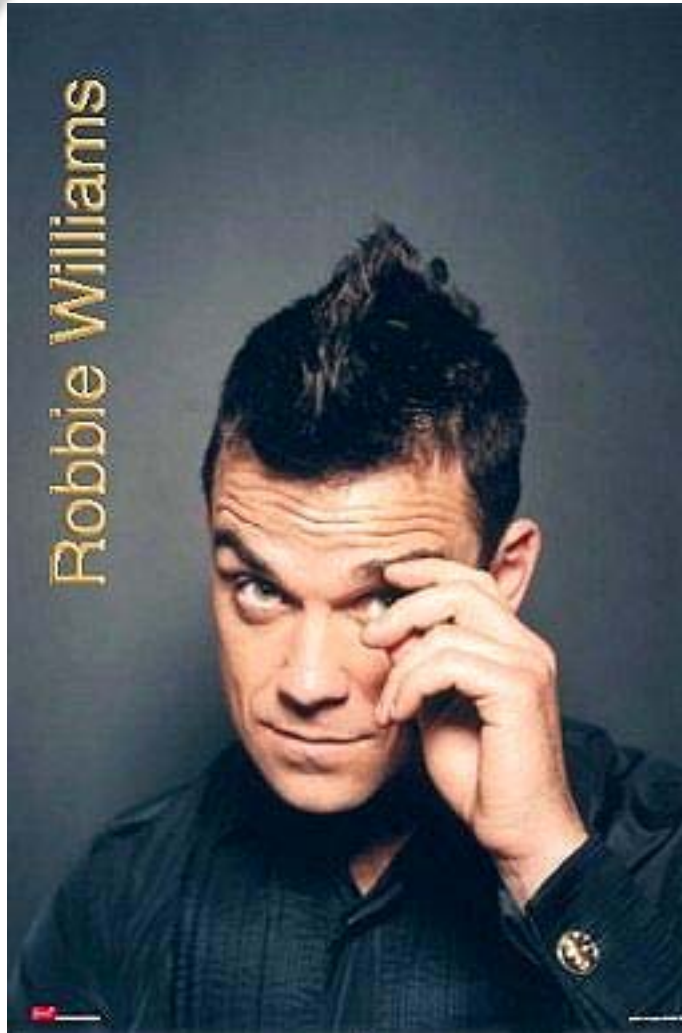
**Full Name:** *Robbie Williams*

**Birthday:** *1974 -0 2- 13*

**City:** *Burslem, Stoke-on-Trent,  
Staffordshire*



**bubble  
mon**  
多萊寶  
www.bubblemon.com



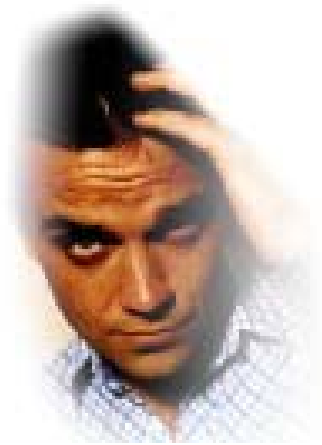


**bubble  
mon**  
**多萊寶**  
[www.bubblemon.com](http://www.bubblemon.com)

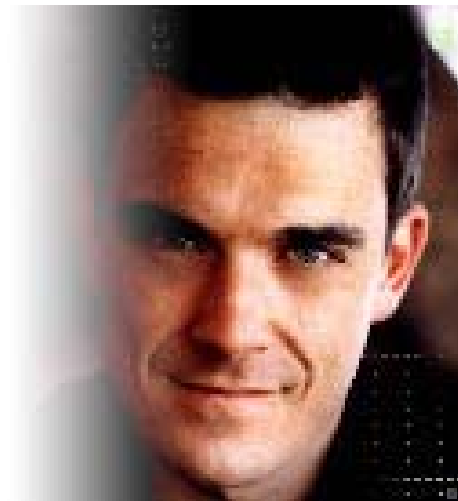
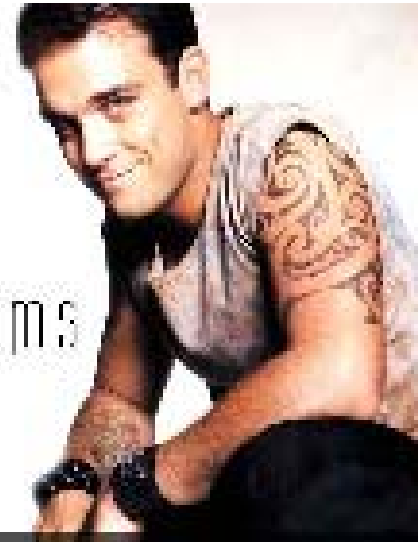




**bubble  
mon**  
多萊寶  
[www.bubblemon.com](http://www.bubblemon.com)

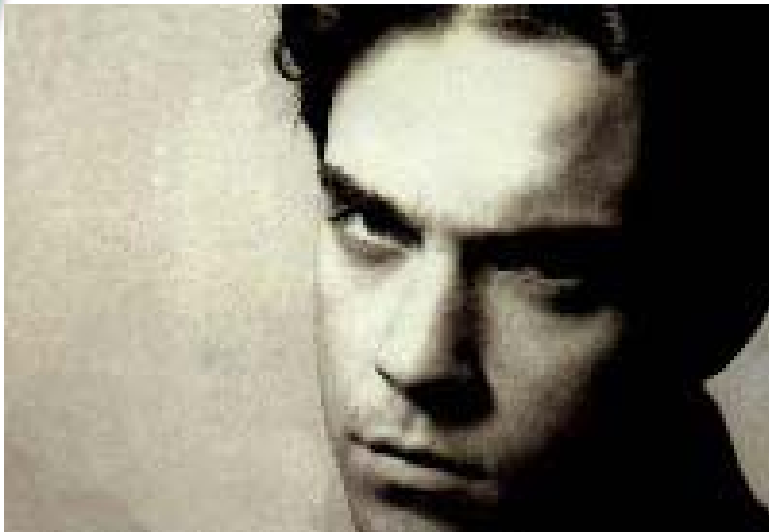
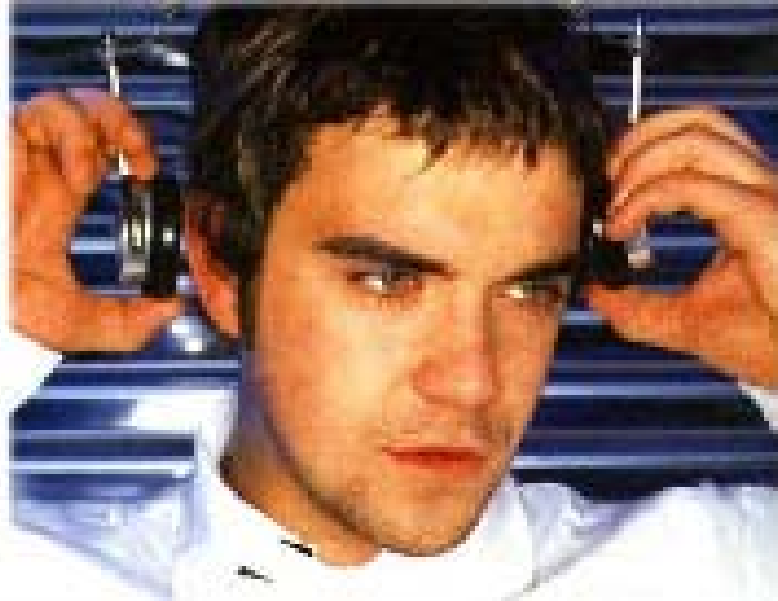


robbie williams





**bubble  
mon**  
**呂萊寶**  
[www.bubblemon.com](http://www.bubblemon.com)





**bubble  
mon**  
多萊寶  
[www.bubblemon.com](http://www.bubblemon.com)







- Contact Us:
- Hong Kong Bubble Mon Licensing
- E-mail Address (Hong Kong): [info@bubblemon.com](mailto:info@bubblemon.com)
- E-mail Address (China): [china@bubblemon.com](mailto:china@bubblemon.com)
- Website: <http://www.bubblemon.com>
- <http://www.bubblemon.com.cn>
- Address: Rm 15,13/F, Wah Shing Center, No.11-13,  
Shing Yip St, Kwun Tong, Kowloon, Hong Kong
- Telephone (Hong Kong): 852-31070717
- Telephone (Shanghai): 021-54937101
- Telephone (Guangzhou): 020-83517925
- Contact Person: Licensing Department



*End of Presentation*

*Thank You*